

The appliance of composite science to underground access covering

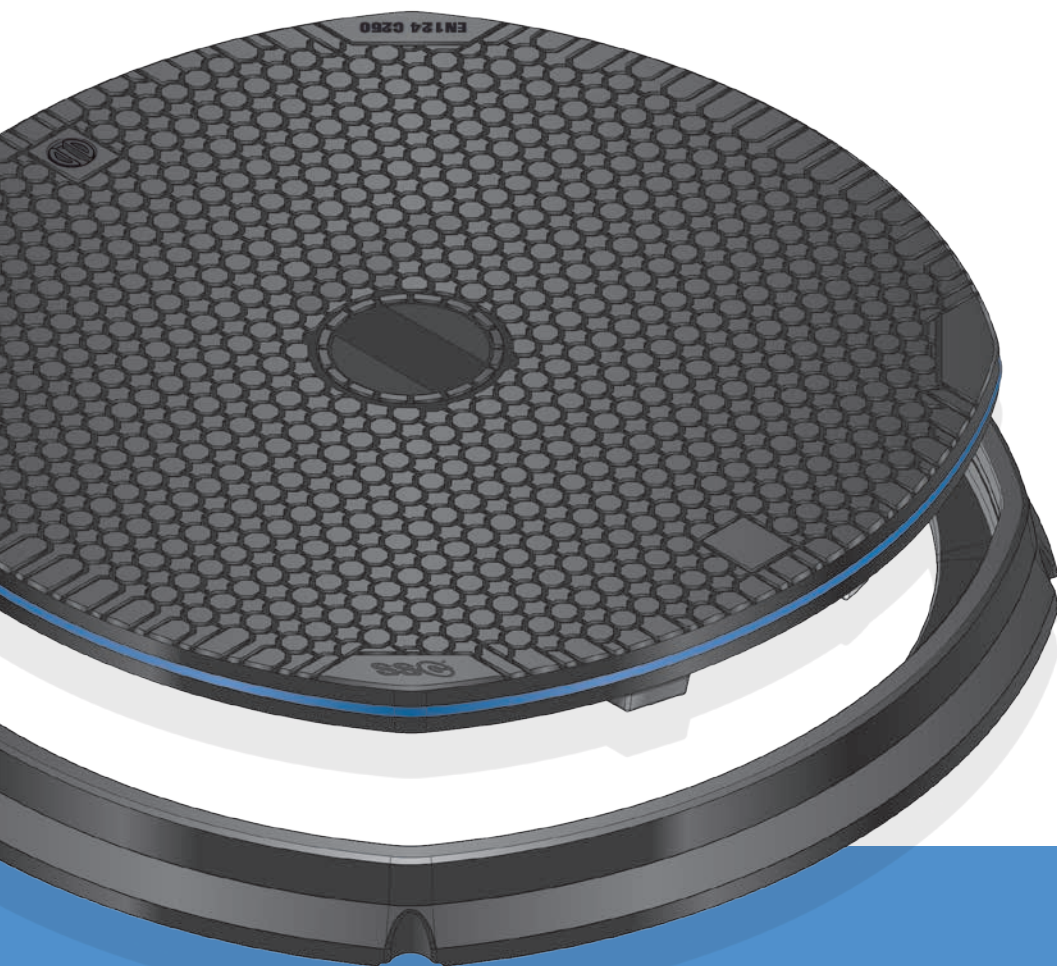
ThruBeam[®]

COVERS

C250 Range

CR106-A/CR106-DC

1060mm Round
Petroleum Forecourt
Composite Access Covers



The Benefits of a Structural Science composite cover over traditional covers

High structural performance

Meets European EN124 C250 standards.

Extended working life

Will not break or spin out. The torsional resistant frames eliminate many of the usual causes of wear with traditional covers.

Permanent anti-slip

Exceeds 0.60 co-efficient of friction even when wet and will retain this anti-slip value throughout its working life.

Secure and lockable

Can be supplied with or without a lock. Cover cannot be left unlocked on replacement. A high security key option is also available.

Injury free removal

Single person removal and replacement without the risk of back injury utilising ergonomically designed lifting tool. Can be supplied with a seal breaker for the watertight version.

Reduced maintenance programmes

Longevity, ease of moving and superior performance reduces maintenance programs. Fitting an SSC cover is the best 'whole life' choice.

Sealing (optional)

100% watertight/sand tight with a unique self cleaning edge seal.

No residual value

Reduced risk of theft.

Transparent to radio waves

'Smart' covers available. Negates the lifting of covers and helps promote better signals being transmitted.

Non-corrosive

Will not corrode when in contact with other materials. Unaffected by fuels, sand, salt and all chemicals met in road environments.

Electrically non-conductive or conductive

Will not conduct electricity, so stray voltage problems are negated. Can be made conductive if required.

Central dip cap

Can be supplied with colour coded central dip to identify fuels.

Client design service

SSC project managed bespoke design services will use our patented ThruBeam® technology to design alternative size and shape solutions to meet customer requirements.

CR106-A 1060mm Round locked cover with keyhousing, watertight seal and **CR106-FR** Frame

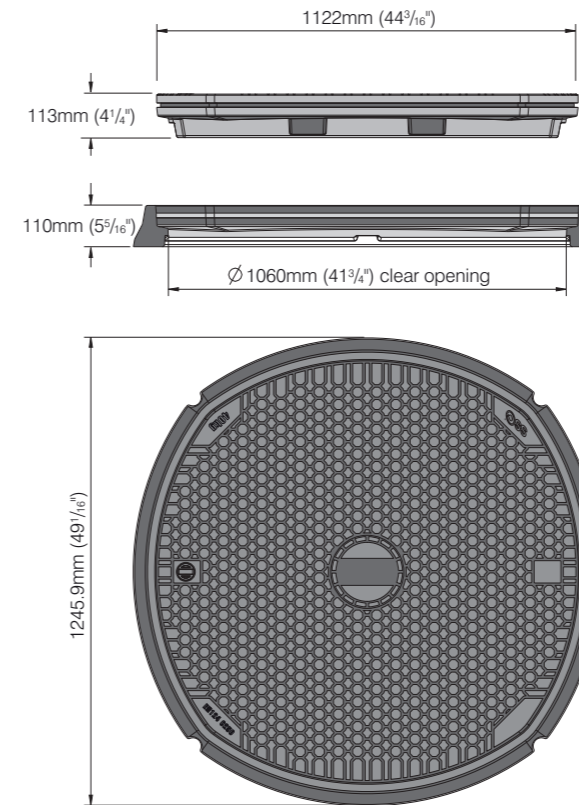


CR106-DC 1060mm Round cover with central dip cap, watertight seal and **CR106-FR** Frame

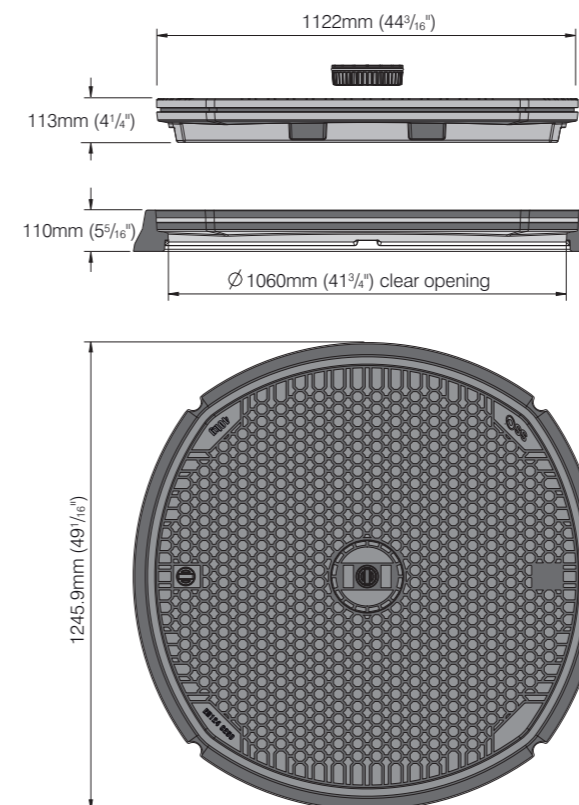
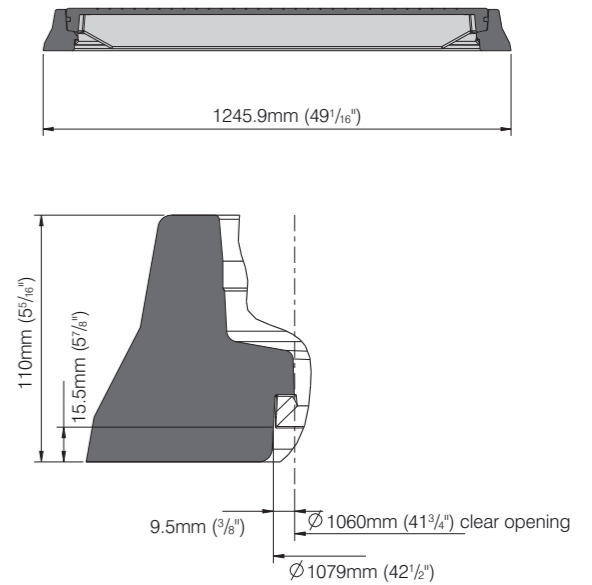


Dimensions

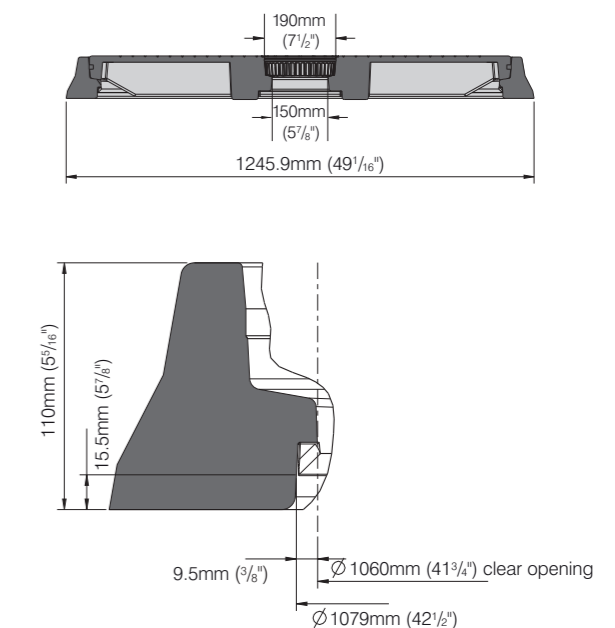
EN124:1994 Class C250 CR106-A and CR106-DC
1060mm Diameter Composite Access Cover



CR106-A 1060mm Round locked cover with keyhousing



CR106-DC 1060mm Round cover with central dip cap



For further information relating to our full product range please go to www.structuralscience.net and download the appropriate pdf file.

The frame is to be installed to the appropriate standard/specification for that particular installation. For reference purposes only. This drawing is not a specification.

Technical Specification

EN124:1994 Class C250

CR106-A and CR106-DC

1060mm Diameter Composite Access Cover

Cover Specification

Load Rating:	EN124:1994 Class C250
Clear Opening:	1060mm Diameter (41¾") CR106-DC incorporates additional central dip cap with 150mm clear opening
External Dimensions:	1122mm Diameter (44¾")
Skid Resistance (wet polishes)	PSRV 60
Weight:	40kg (88.2lb) Combined weight with frame 53kg (116.8lb)
Lifting points:	Single key housing
Tread depth:	Tread depth complies with EN124:1994
Tread type:	Embedded aggregate – uni-directional
Wear Indicators:	Four moulded
Markings:	Week, year and location of manufacture on the underside of cover. Cover size, weight on the top surface.
Corrosion/Chemical resistance:	All component parts are resistant to chemical attack, diesel, petrol, salt and water or a combination of the above over the lifespan of the cover. Surface discolouration is acceptable in service.
Combustion properties:	All component parts do not support combustion. Products of combustion do not contain harmful chemicals (e.g. bromides)
Sealed:	Yes (optional - can be retro-fitted)
Vented:	Available on request
Carbon footprint:	Low
Material:	Advanced fibre glass composite
Client logo:	Can be provided on top surface
Security Features:	Lock and security plug (lock cannot be left open on replacement of cover)

Frame Specification

Load Rating:	EN124:1994 Class C250
Clear Opening:	1060mm Diameter (41¾")
Weight:	13kg (28.7lb)
External Dimensions:	1245.9mm Diameter (49¼")
Material:	Advanced fibre glass composite
Installation Details:	Provided in full as separate document

Designs and specifications are subject to alteration, so that continuous improvement can be undertaken.



Structural Science Composites Ltd

8 James Freel Court, James Freel Close, Barrow In Furness, UK, LA14 2NG
T: +44 (0)1229 814340 E: covers@structuralscience.net W: www.structuralscience.net