

The appliance of composite science to underground access covering

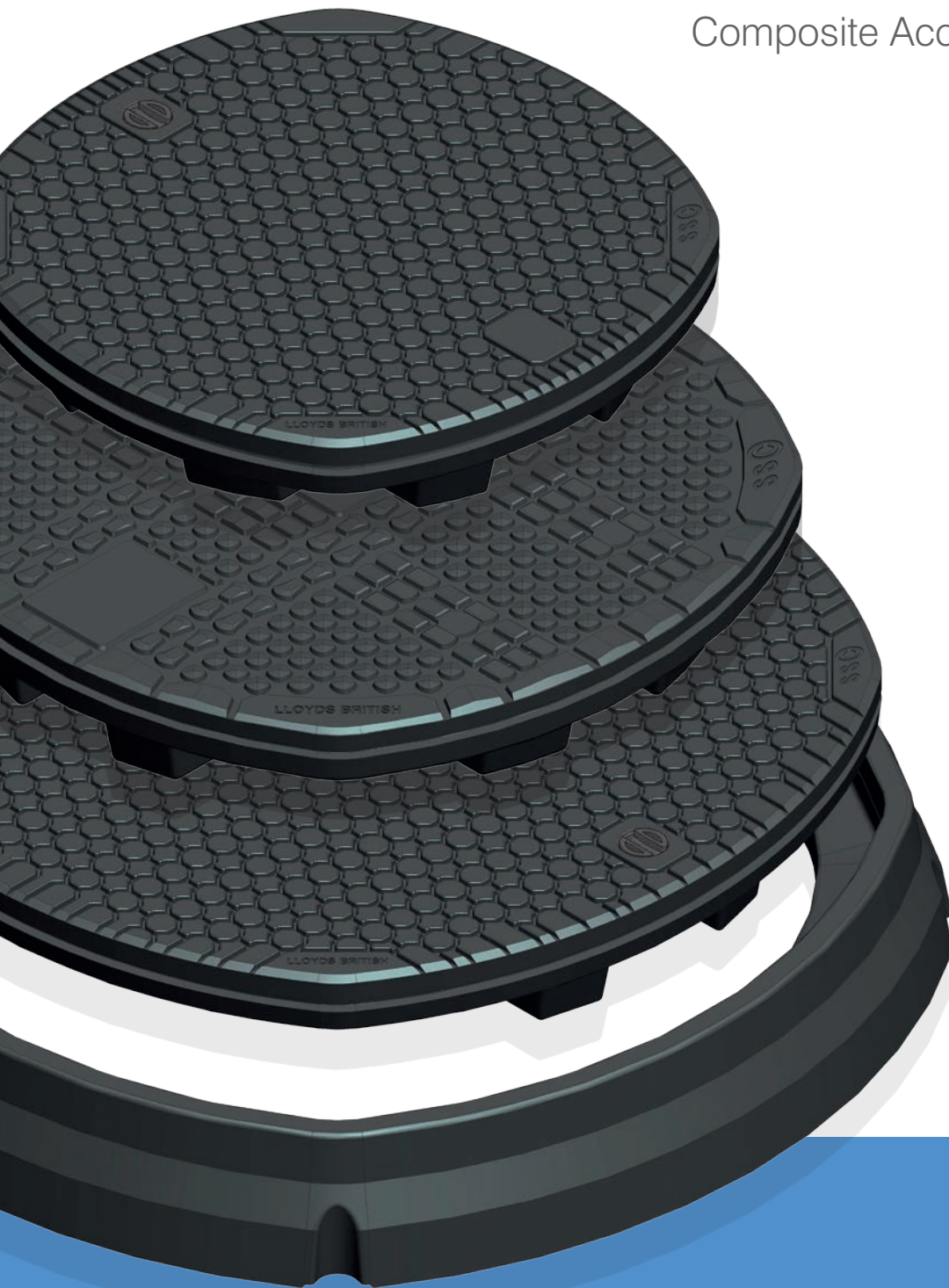
ThruBeam[®]

C O V E R S

D400 Range

DR60, DR76 & DR90

600mm, 760mm and 900mm
Solid Round Vehicular
Composite Access Covers



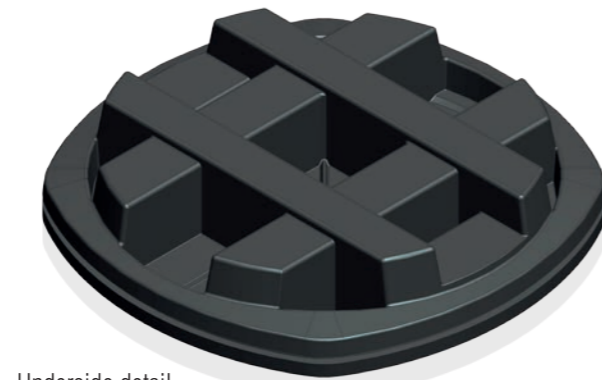
DR60 600mm

Solid Round Vehicular Composite Access Cover

Cover

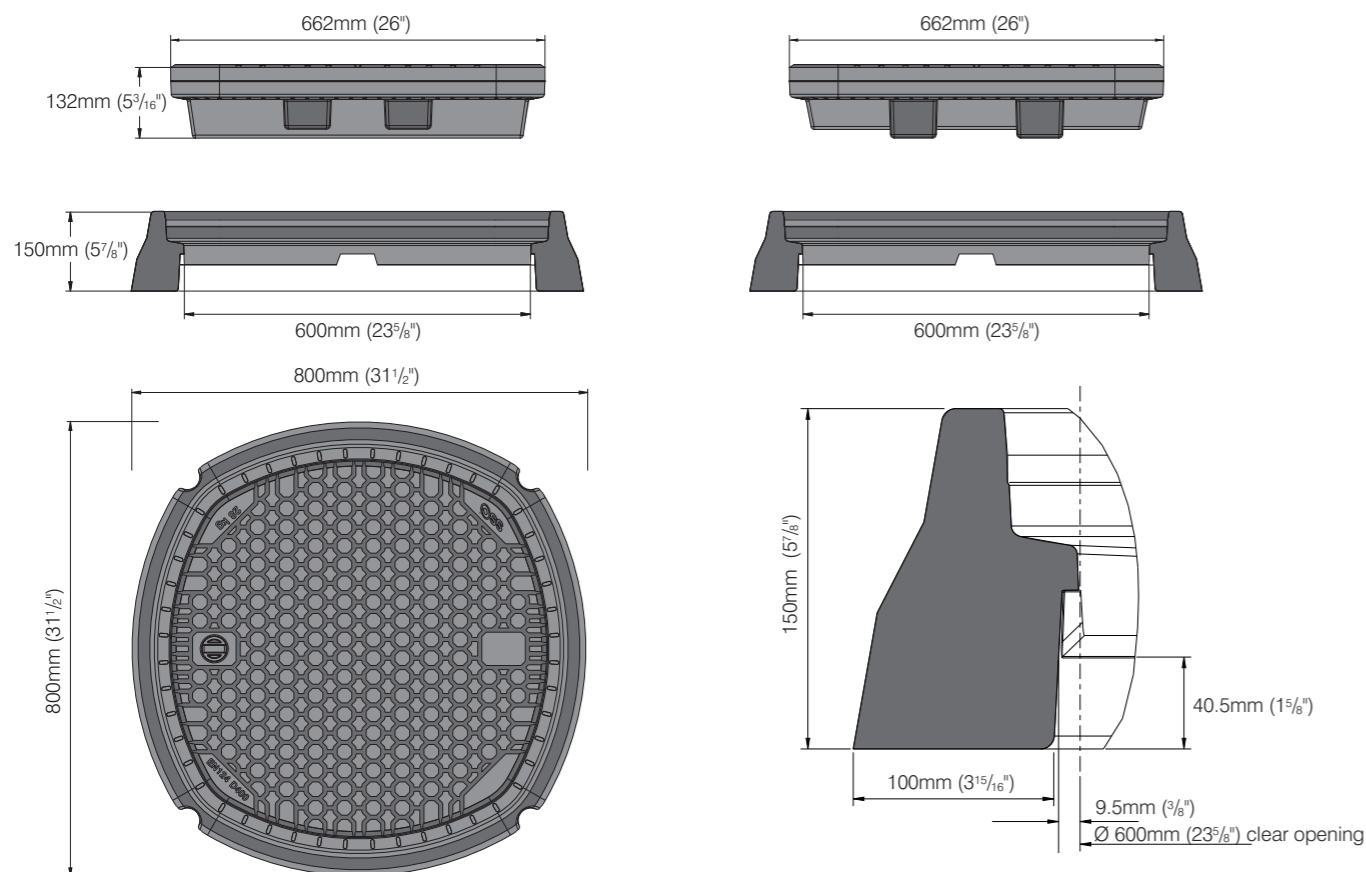


Frame



Underside detail

Dimensions



ThruBeam
COVERS

Technical Specification

EN124:1994 Class D400

DR60 600mm Diameter

Vehicular Composite Access Cover

Cover Specification

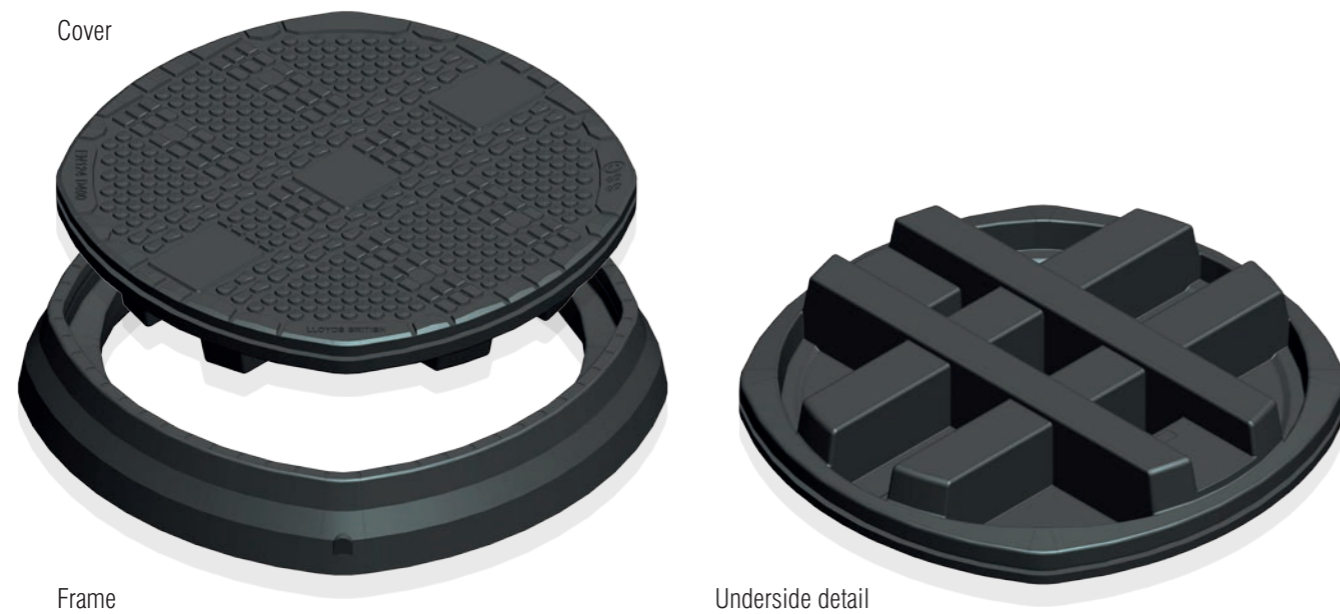
Load Rating:	EN124:1994 Class D400
Clear Opening:	600mm Diameter (23 ^{5/8} ")
External Dimensions:	662mm Diameter (26")
Skid Resistance (wet polishes):	PSRV 60
Weight:	28kg (61.6lb) Combined weight with cover 41kg (90.4lb)
Lifting points:	Single key housing (also available with pry points)
Tread depth:	Tread depth complies with EN124:1994
Tread type:	Embedded aggregate – uni-directional
Wear Indicators:	Four moulded
Markings:	Week, year and location of manufacture on the underside of cover. Cover size, weight on the top surface.
Corrosion/Chemical resistance:	All component parts are resistant to chemical attack, diesel, petrol, salt and water or a combination of the above over the lifespan of the cover. Surface discolouration is acceptable in service.
Combustion properties:	All component parts do not support combustion. Products of combustion do not contain harmful chemicals (e.g. bromides)
Sealed:	Yes (optional - can be retro-fitted)
Vented:	Available on request
Carbon footprint:	Low
Material:	Advanced fibre glass composite
Client logo:	Can be provided on top surface
Security Features:	Lock and security plug (lock cannot be left open on replacement of cover)

Frame Specification

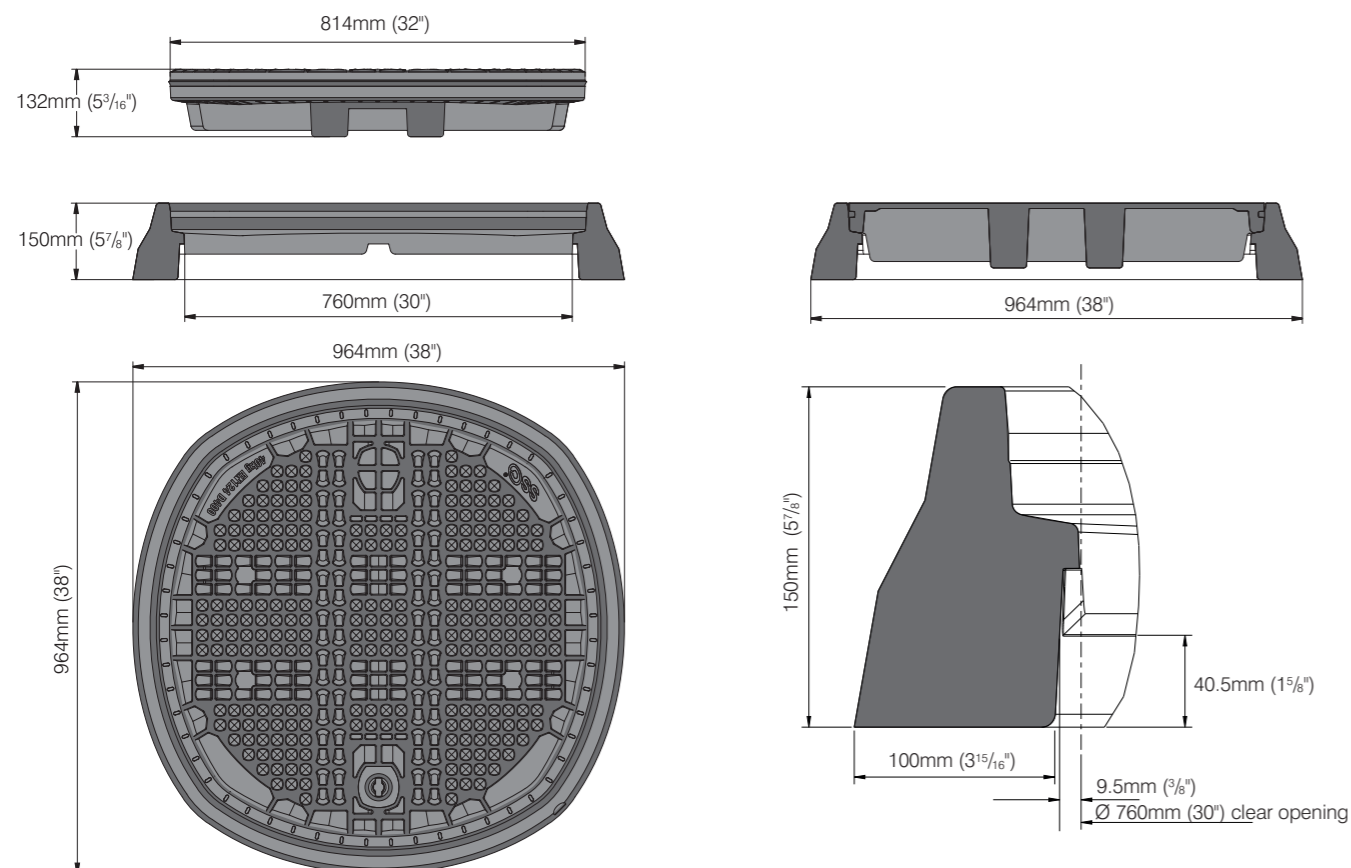
Load Rating:	EN124:1994 Class D400
Clear Opening:	600mm Diameter (23 ^{5/8} ")
Weight:	13kg (28.6lb)
External Dimensions:	800mm Diameter (31 ^{1/2} ")
Material:	Advanced fibre glass composite
Installation Details:	Provided in full as separate document

DR76 760mm

Solid Round Vehicular Composite Access Cover



Dimensions



ThruBeam
COVERS

Technical Specification

EN124:1994 Class D400

DR76 760mm Diameter

Vehicular Composite Access Cover

Cover Specification

Load Rating:	EN124:1994 Class D400
Clear Opening:	760mm Diameter (30")
External Dimensions:	814mm Diameter (32")
Skid Resistance (wet polishes):	PSRV 60
Weight:	36kg (79.3lb) Combined weight with cover 52kg (114.6lb)
Lifting points:	Single key housing (also available with pry points)
Tread depth:	Tread depth complies with EN124:1994
Tread type:	Embedded aggregate – uni-directional
Wear Indicators:	Four moulded
Markings:	Week, year and location of manufacture on the underside of cover. Cover size, weight on the top surface.
Corrosion/Chemical resistance:	All component parts are resistant to chemical attack, diesel, petrol, salt and water or a combination of the above over the lifespan of the cover. Surface discolouration is acceptable in service.
Combustion properties:	All component parts do not support combustion. Products of combustion do not contain harmful chemicals (e.g. bromides)
Sealed:	Yes (optional - can be retro-fitted)
Vented:	Available on request
Carbon footprint:	Low
Material:	Advanced fibre glass composite
Client logo:	Can be provided on top surface
Security Features:	Lock and security plug (lock cannot be left open on replacement of cover)

Frame Specification

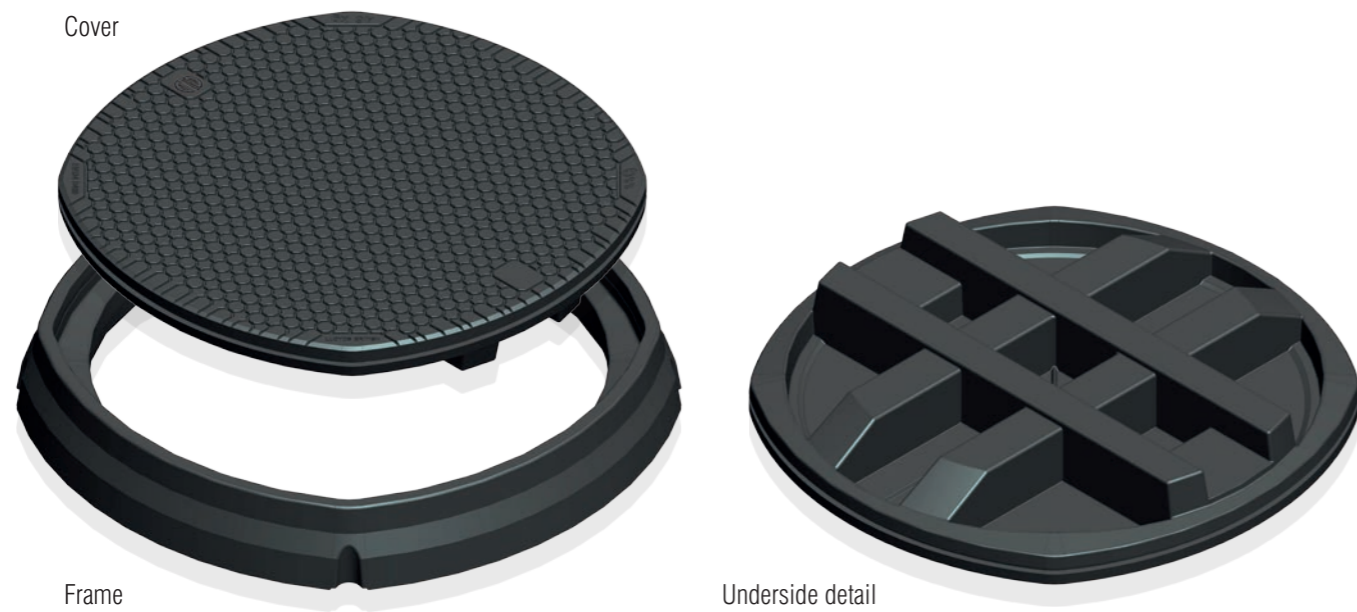
Load Rating:	EN124:1994 Class D400
Clear Opening:	760mm Diameter (30")
Weight:	16kg (35.3lb)
External Dimensions:	964mm Diameter (38")
Material:	Advanced fibre glass composite
Installation Details:	Provided in full as separate document

4 The frame is to be installed to the appropriate standard/specification for that particular installation. For reference purposes only. This drawing is not a specification.

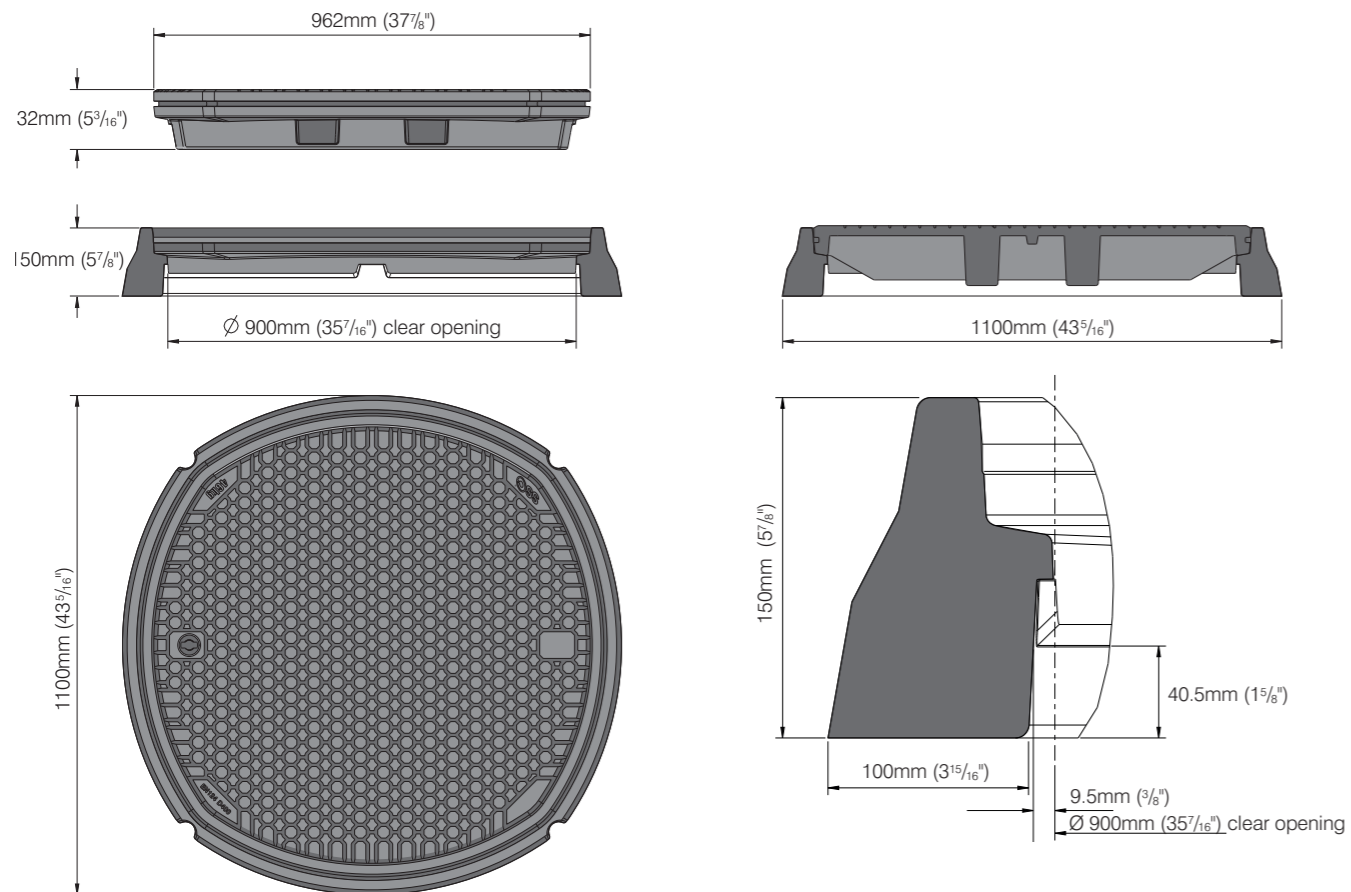
Designs and specifications are subject to alteration, so that continuous improvement can be undertaken.

DR90 900mm

Solid Round Vehicular Composite Access Cover



Dimensions



ThruBeam
COVERS

Technical Specification

EN124:1994 Class D400

DR90 900mm Diameter

Vehicular Composite Access Cover

Cover Specification

Load Rating:	EN124:1994 Class D400
Clear Opening:	900mm Diameter (35 7/16")
External Dimensions:	962mm Diameter (37 7/8")
Skid Resistance (wet polishes)	PSRV 60
Weight:	46kg (101.4lb) Combined weight with cover 61kg (134.5lb)
Lifting points:	Single key housing (also available with pry points)
Tread depth:	Tread depth complies with EN124:1994
Tread type:	Embedded aggregate – uni-directional
Wear Indicators:	Four moulded
Markings:	Week, year and location of manufacture on the underside of cover. Cover size, weight on the top surface.
Corrosion/Chemical resistance:	All component parts are resistant to chemical attack, diesel, petrol, salt and water or a combination of the above over the lifespan of the cover. Surface discolouration is acceptable in service.
Combustion properties:	All component parts do not support combustion. Products of combustion do not contain harmful chemicals (e.g. bromides)
Sealed:	Yes (optional - can be retro-fitted)
Vented:	Available on request
Carbon footprint:	Low
Material:	Advanced fibre glass composite
Client logo:	Can be provided on top surface
Security Features:	Lock and security plug (lock cannot be left open on replacement of cover)

Frame Specification

Load Rating:	EN124:1994 Class D400
Clear Opening:	900mm Diameter (35 7/16")
Weight:	15kg (33.1lb)
External Dimensions:	1100mm Diameter (43 5/16")
Material:	Advanced fibre glass composite
Installation Details:	Provided in full as separate document

The Benefits of a Structural Science composite cover over traditional covers

High structural performance

Meets European EN124 D400 standards.

Extended working life

Will not break or spin out. The torsional resistant frames eliminate many of the usual causes of wear with traditional covers.

Permanent anti-slip - cycle and motorbike friendly

Exceeds 0.60 co-efficient of friction even when wet and will retain this anti-slip value throughout its working life unlike conventional metal covers.

Secure and lockable

Can be supplied with or without a lock. Cover cannot be left unlocked on replacement. A high security key option is also available.

Injury free removal

Single person removal and replacement without the risk of back injury utilising ergonomically designed lifting tool. Can be supplied with a seal breaker for the watertight version.

Reduced maintenance programmes

Longevity, ease of moving and superior performance reduces maintenance programs. Fitting an SSC cover is the best 'whole life' choice.

Sealing - optional

100% watertight/sand tight with a unique self cleaning edge seal.

Ventable

Covers can be vented which helps prevent the build up of gases. Holes conform to ADA regulations.

No residual value

Reduced risk of theft.

Transparent to radio waves

'Smart' covers available. Negates the lifting of covers and helps promote better signals being transmitted thus improving asset management.

Non-corrosive

Will not corrode when in contact with other materials. Unaffected by fuels, sand, salt and all chemicals met in road environments.

Electrically non-conductive or conductive

Will not conduct electricity, so stray voltage problems are negated. Can be made conductive if required.

Client design service

SSC project managed bespoke design services will use our patented ThruBeam[®] technology to design alternative size and shape solutions to meet customer requirements.



Structural Science Composites Ltd

8 James Freel Court, James Freel Close, Barrow In Furness, UK, LA14 2NG
T: +44 (0)1229 814340 E: covers@structuralscience.net W: www.structuralscience.net